

The background of the page is a complex, repeating pattern of light gray geometric shapes and symbols. These include triangles, squares, circles, and lines, some of which are interconnected to form larger, more intricate designs. The overall aesthetic is technical and architectural, reminiscent of a blueprint or a complex diagram.

INTRODUCTION TO GALACTIC CONSCIOUSNESS
A 28-DAY PROGRAM

HEPTAD 3: TRANSFORM

Heptad 3: Transform



Kin 128: Yellow Spectral Star (Sunday, August 9)

Lesson 15: Time is Art

We are actors in a great cosmic motion picture. The quality of the movie we perceive is shaped by the color of our thoughts, the intensity of our emotions, and the clarity of our visions. We are the artists projecting behind the scenes onto the screen of creation. Everything we do is Art.

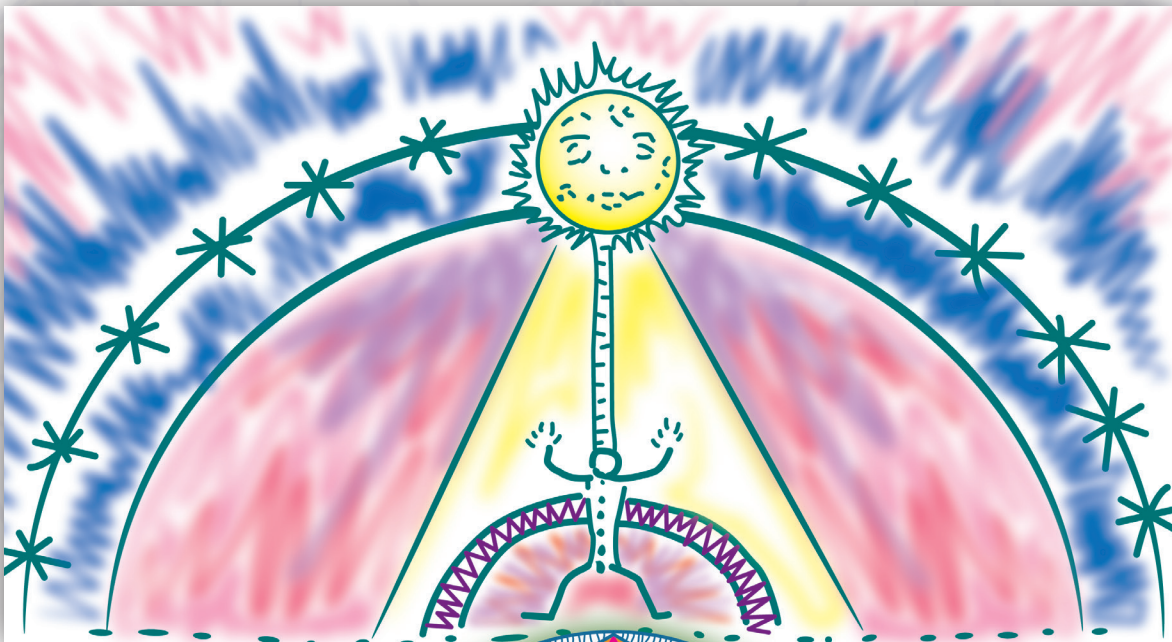
Today Kin 128 is the liberation of art and beauty. The conscious creation of art (in whatever form) is one of the most effective (and fun) ways to return to your Source Essence.

“Art” meaning anything you create: whether it be a song, a relationship, a painting or a meal. Rearranging your house or feng shui is an art. Love is an art. Gardening is art. Building is art; etc. The point is to find what makes you feel like yourself. When you are vibrating with joy in your own essence, then the cosmic doors swing open. So get out your pen and rewrite the world (or draw or paint or build it).

Allow your inspiration and creativity to guide you in this third week of the Magnetic Moon. Remember that the third week holds the key power of **Transformation** (Week 1 **Initiates**; Week 2 **Refines**; Week 3 **Transforms** and Week 4 **Ripens**).

My role in society, or any artist's or poet's role, is to try and express what we all feel. Not to tell people how to feel. Not as a preacher, not as a leader, but as a reflection of us all.

—John Lennon, White Planetary Wizard, Kin 114





Kin 129: Red Crystal Moon (Monday, August 10) Lesson 16: Decode your Family and Friends

Crystal days are the day of cooperation. You might consider starting a study group every 13 days on the Crystal days to explore different facets of the synchronic order. Working in groups accelerates memory, magic and synchronicity.

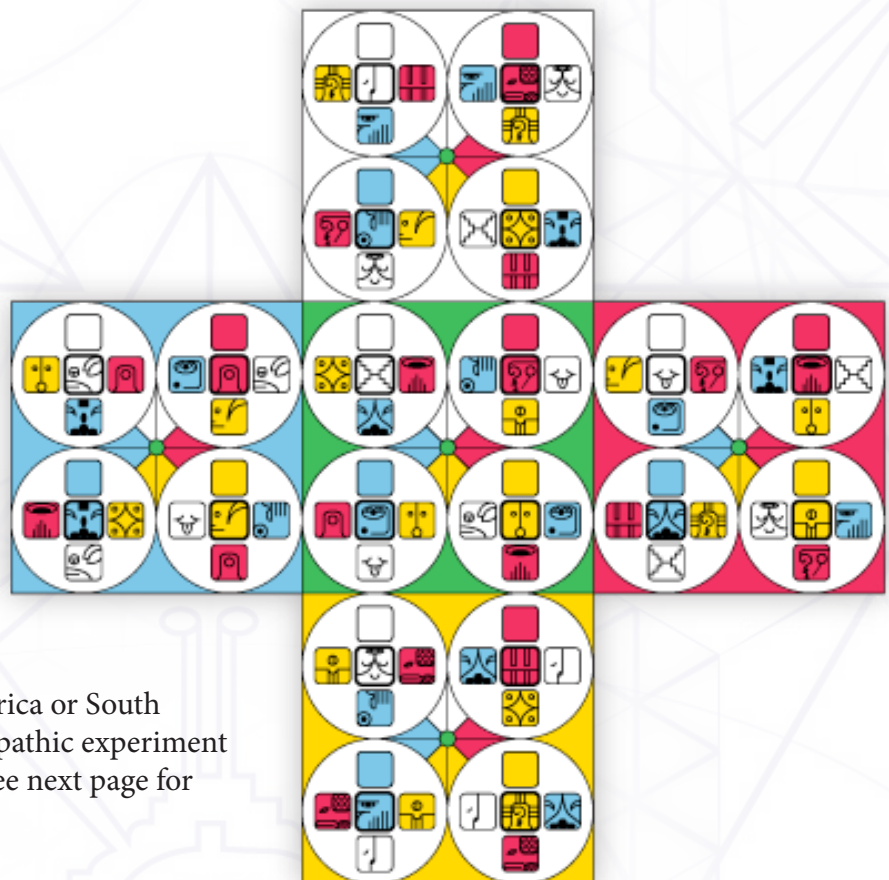
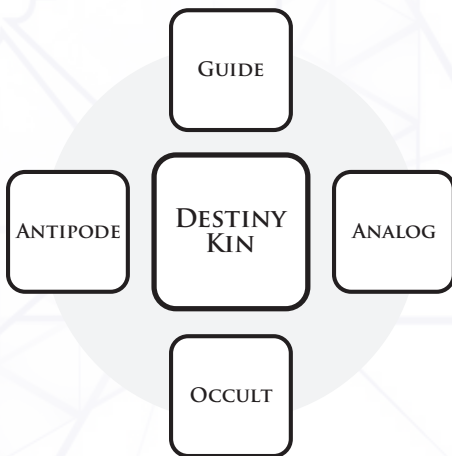
Today, make a list of significant dates and people in your life and decode their galactic signatures. Study the relationships.

Study the fifth force oracle for each galactic signature. (See p. 270-271 of your Almanac). For example today is Crystal Moon, the guide is Dragon (birth), the analog is Dog (love), the antipode is Storm (self-generation) and the occult power is Human (wisdom/free will).

You might keep a special journal to document the synchronic connections.

Below is the Oracle Key, and “Oracle Board”. The Oracle Board shows you the basic Oracle Pattern for each of the 20 Solar Seals. You can find the guide of any kin by going to www.lawoftime.org/timeshipearth/bookofkin.html

Using the Oracle Key and Oracle Board you can construct the Oracle for the significant dates and people in your life. Begin to notice patterns and connections. Have fun!



Note that the 20 Solar Seals as shown in the Oracle Board combine to create a larger “fifth force” pattern. These fractal patterns reveal the movement of space in time.

IMPORTANT: If you are in North America or South America, the globally synchronized telepathic experiment for Lesson 17/Kin 130 happens today. See next page for instructions.



Kin 130: White Cosmic Dog (Tuesday, August 11)

Lesson 17: Cosmic Love

Note that today and tomorrow we are at the center of the Tzolkin matrix, Kin 130-131. Today is the final day of the Mirror wavespell. On this day you are invited to participate in a telepathic experiment between the Foundation for the Law of Time and Russian Academy of Sciences. Here are instructions to participate. Keep a blank piece of paper and pen near you and write the time and bioregion from which you are participating.

1. Begin by meditating on pure white radiant light. Relax into the natural state releasing your thoughts with the out breath.
2. Turn your attention to the Orion constellation. If you are up early enough you might go outside and meditate on it as it is especially visible now. Orion's prominent three-star belt lies in between its two brightest stars, Betelgeuse and Rigel. Then turn your attention to Armenia where the experiment is being transmitted from inside the Kozyrev Mirrors (3 - 4 a.m. Moscow time = 12am Midnight - 1am UTC/GMT - Pacific Time 5pm = Eastern Time 8pm OF THE PREVIOUS DAY/AUGUST 10).
3. Receive. Relax and open yourself. Focus on receiving 7 symbols. When an image or symbol appears draw it on your paper.
4. Transmit. Next draw 7 images or symbols that you wish to transmit to the noosphere. Focus on transmitting each symbol with full concentration.
5. On your paper be sure to write "Received" next to the 7 that you received; and write "Transmitted" on the 7 symbols that you transmitted.
6. Write the date at the top. Your name, birthdate and/or galactic signature.
7. Scan and send your data **WITHIN THREE DAYS** to ISRICA2@RAMBLER.RU and info@lawoftime.org. In the subject write: **Kin 130 Experiment**.



Kin 131: Blue Magnetic Monkey (Wednesday, August 12) Lesson 18: Wavespells and Castles

Welcome to the Monkey Wavespell of Magic! Remember that on the **Magnetic** days (tone 1) we set our purpose for the next 13 days.

The Monkey is the 11th of 20 wavespells. **Remember that each wavespell has 13 days ($13 \times 20 = 260$).**

Draw and color the Monkey wavespell. (See also **Lesson 9 from Week 2**). Meditate on the story that emerges through the 13 day sequence.

For example, the (1) **Monkey** initiates the cycle of MAGIC. This Magic is then stabilized by the (2) **Human's** wisdom; activated by the (3) **Skywalker's** wakefulness and extended through space by the (4) **Wizard**; empowered by the (5) **Eagle's** vision; organized by the (6) **Warrior**; mystically sustained by the (7) **Earth**; harmonized by the (8) **Mirror**; realized by the (9) **Storm**; manifest as the (10) **Sun**; liberated by the (11) **Dragon** and crystallized in the (12) **Wind** before finally being cosmically sealed by the (13) **Night**.

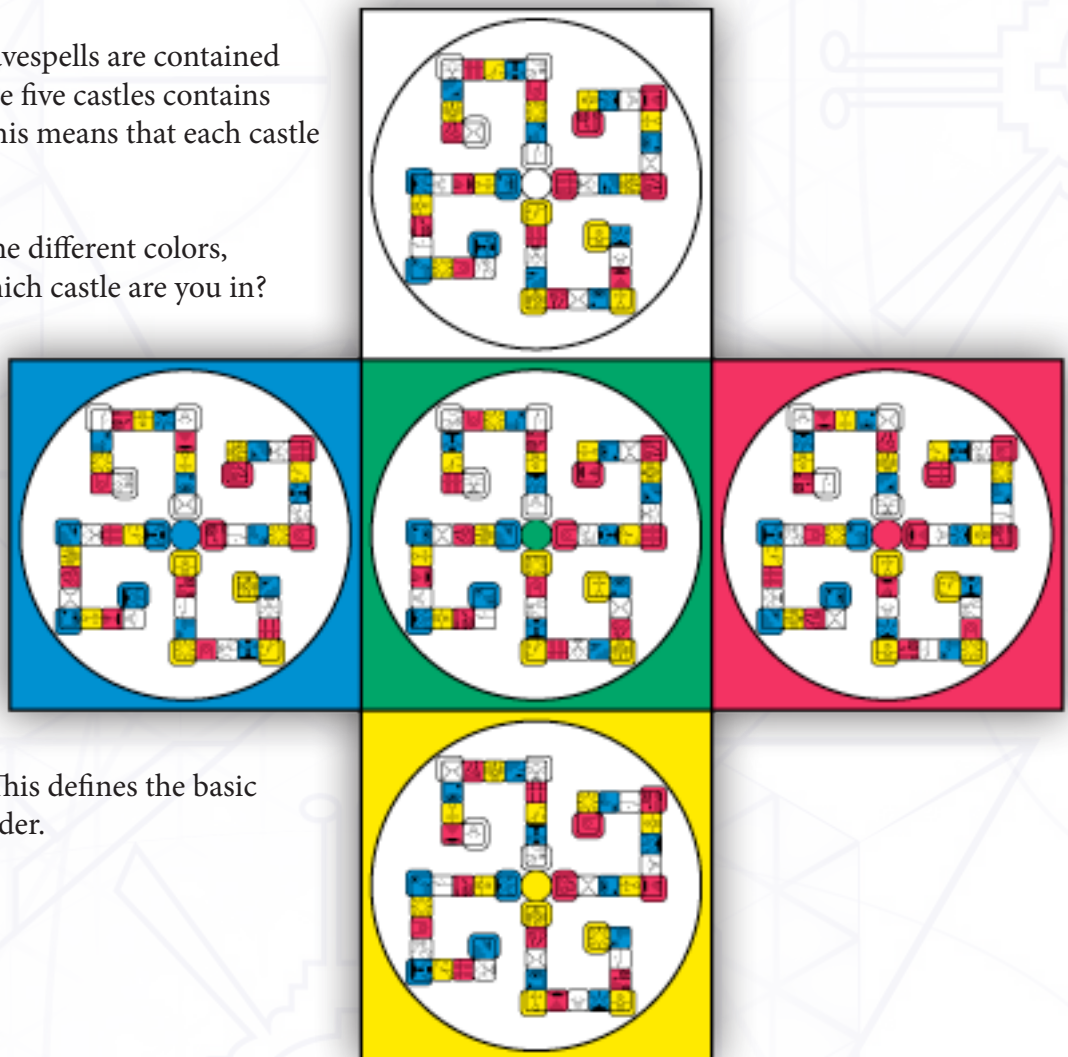
Now let's take this a step further.

Note that each of these 20 wavespells are contained within five castles. Each of the five castles contains four wavespells of 13 days. This means that each castle contains 52 days. $4 \times 13 = 52$.

Study the graphic and note the different colors, directions and functions. Which castle are you in? Which wavespell are you in?

Red castle (East), White castle (North), Blue castle (West), Yellow castle (South) and Green castle (Central matrix.).

Just as the 20 solar seals are organized into the five harmonics of time, there are 20 wavespells organized into the five castles of time. This defines the basic patterns of the synchronic order.





Kin 132: Yellow Lunar Human (Thursday, August 13)

Lesson 19: Opening to Earth Consciousness

The Human seal corresponds with planet Earth. Here is a meditation:

Visualize yourself right where you are. Notice the space that you are in, whether it be inside or outside. Become aware of all of your senses. What do you see? hear? Smell? Taste? Are you touching anything? Now visualize yourself levitating, up, up, up and look down on it from above. Lift out further and see the entire street or area that you are in. Now expand out and lift higher and higher out into space.

From space, view the Earth as a single luminous blue mandala; like a wheel that possesses everything. See the Earth from all angles. See that it is a planetary orb, a wheel of turning in space with an essential value, its dharma or truth. The dharma or capacity of Earth is its capacity to sustain life.

Visualize the whole of life on earth, from the animals, to the plants, the humans down onto the insects and plankton. See it all as one whole system. The whole of life on the Earth is the biosphere, or the sphere of life that covers the surface of the Earth like a film or vibrant mantle that is ever in motion. Really visualize how all of the different life forms and processes are one unity on this shining blue orb.

Now let your mind penetrate beneath the surface of the Earth. Feel the spherical layers of sediment and crystalline rock. Go to the core and find the massive iron crystal octahedron. Feel this crystal core as a dynamic radio receiver elongated in the direction of each of its magnetic poles.

Place yourself in meditation at the very center of that crystal radio receiver. Who is the Earth receiving? What is the Earth broadcasting? Where is the Earth receiving? What messages is Earth giving you right now? Write your reflections in your journal.





Kin 133: Red Electic Skywalker (Friday, August 14)

Lesson 20: Activating New Earth

Today is the day to *activate in order to explore* guided by the Earth (Navigator). How can we begin to envision this new Earth in order to experience ourself as co-creating with it? Here is a meditation:

1. Sit quietly in a calm environment and allow your mind to relax back to its natural state. Dissolve your thoughts with the out-breath.
2. Ask to receive the highest vision possible for the planet and all sentient beings.
3. In a state of relaxed focus, allow your mind to envision the highest creation - i.e. crystalline water, everyone healthy, big flowers and gardens (or whatever your vision).
4. Explore the feeling vibration of this vision and begin to amplify it.
5. Now perceive yourself as a radio station picking up all the highest visions ever imagined on this planet and beyond. (Through positive envisioning you heighten your resonance with the Earth and open new channels for heightened vibratory structures to enter our planet).
6. Hold this energy for as long as possible. Watch and listen. Write your reflections in your journal.



Kin 134: White Self Existing Wizard (Saturday, August 15) Lesson 21: Defining the 4 Clans

Wisdom is self-existing, but it needs a form to manifest in. This is the meaning of tone 4. Discipline and receptivity create the point where wisdom begins to manifest. Since today is tone 4 we will turn our attention to the Four Clans. The four Clans are woven into the codes of time based on the primal four galactic elements (Fire, Blood, Truth and Sky).

Which of the Four Clans do you belong to?

Meditate on the unfolding of the Four Clans. Speak each of the commands aloud in order to further absorb the sequence of meaning.

...Fire self-generates...

YELLOW FIRE CLAN:

Yellow Sun tribe generates fire as the power of universal fire

Red Dragon tribe transmits fire as the power of birth

White Wind tribe energizes fire as the power of spirit

Blue Night tribe protects fire as the power of abundance

Yellow Seed tribe climaxes fire as the power of flowering

Through the power of flowering, fire becomes blood...

RED BLOOD CLAN:

Red Serpent tribe generates blood as the power of life force

White Worldbringer tribe transmits blood as the power of death

Blue Hand tribe energizes blood as the power of accomplishment

Yellow Star tribe protects blood as the power of elegance

Red Moon tribe climaxes blood as the power of universal water.

Through the power of universal water, blood becomes truth...

WHITE TRUTH CLAN:

White Dog tribe generates truth as the power of heart

Blue Monkey tribe transmits truth as the power of magic

Yellow Human tribe energizes truth as the power of free will

Red Skywalker tribe protects truth as the power of space

White Wizard tribe climaxes truth as the power of timelessness.

Through the power of timelessness, truth becomes sky...

BLUE SKY CLAN:

Blue Eagle tribe generates sky through power of vision

Yellow Warrior tribe transmits sky through power of intelligence

Red Earth tribe energizes sky through power of navigation

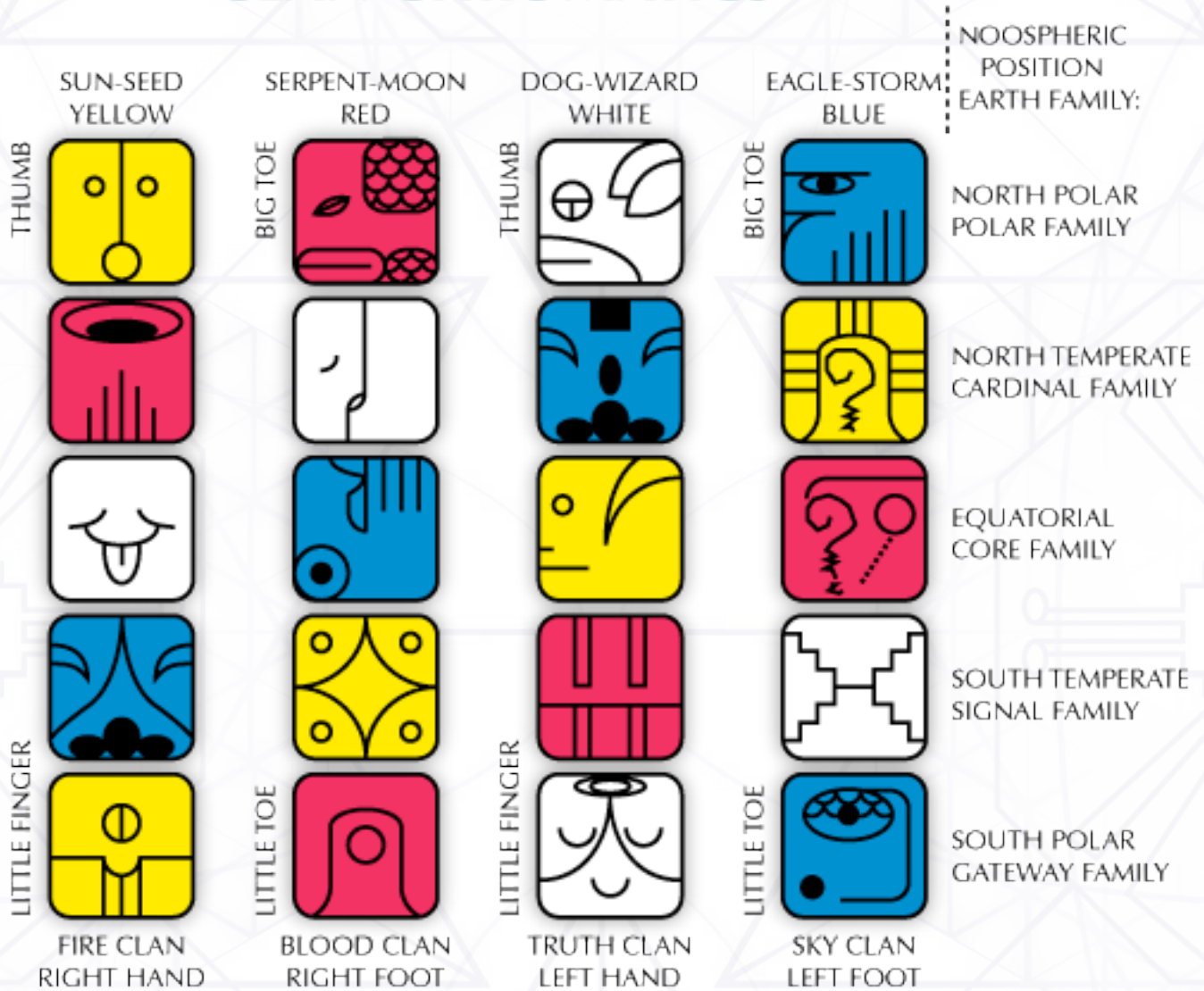
White Mirror tribe protects sky through power of endlessness

Blue Storm tribe climaxes sky as the power of self-generation.

Through the power of self-generation, sky becomes fire...

The graphic below shows the Four Clans of Time (the four vertical columns). Study their interrelationships. Note that every Solar Seal is part of both an Earth Family and a Clan. You'll also note that each hand or foot corresponds to one whole Clan (For example the Fire Clan is the right hand, etc.)

CLAN CHROMATICS



Close the Heptad with the Rainbow Bridge Meditation (www.lawoftime.org/rainbow).